



2021-22 K12 ESEA Federal Programs Monitoring

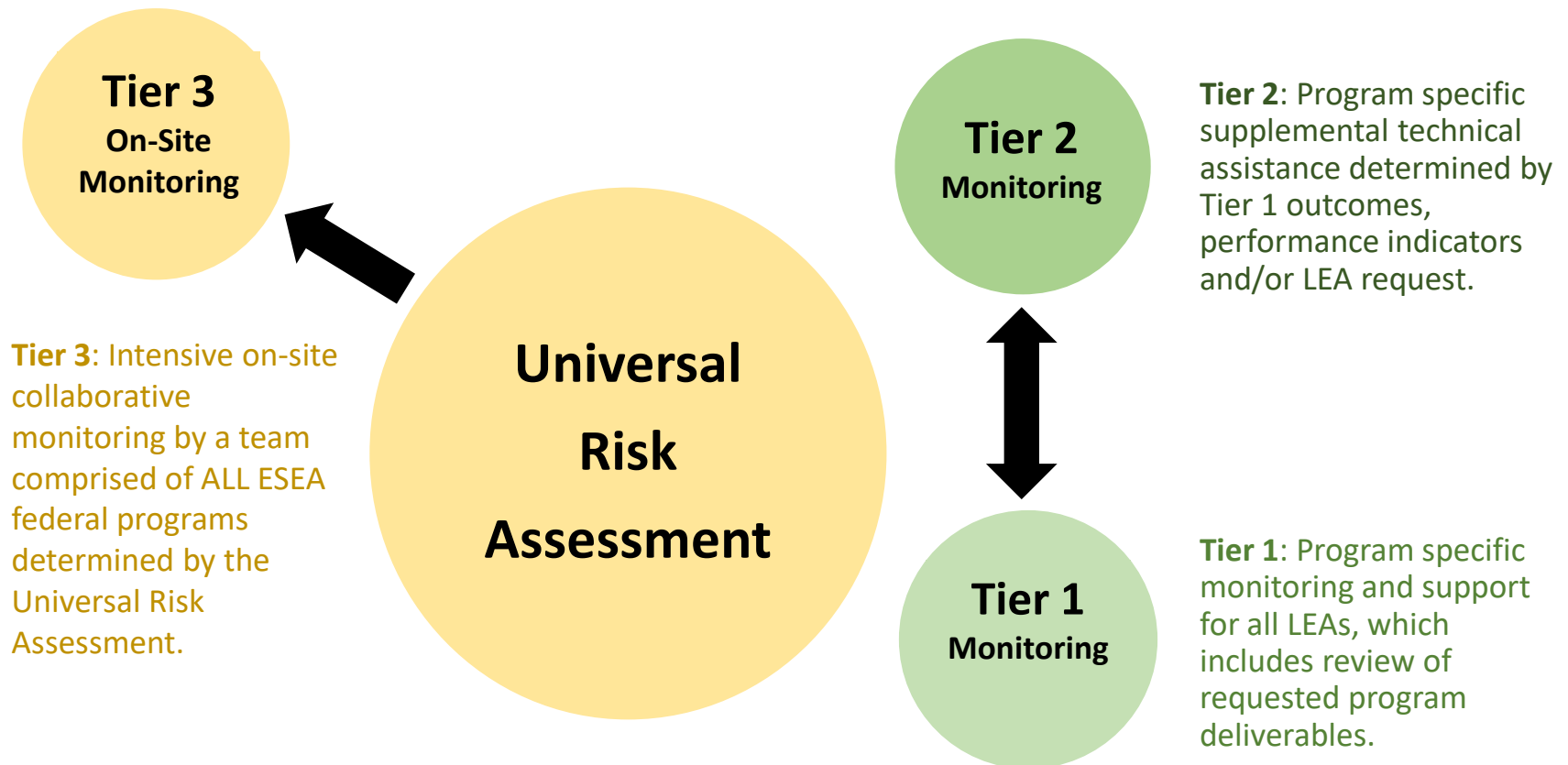
March Tier 1 Uploads and Tier 2 Supports

Title I, Part A (TIPA)

Objectives

- Universal Monitoring System
- Tier 1
 - Professional Development
 - March Uploads
- Tier 2
- Contacts

2021-22 Universal Monitoring System for K12 ESEA Federal Programs



Program Monitoring Tier 1

Tier 1 Supports			
October Uploads	November Uploads	February Uploads	March Uploads
Title I, Part A	Title I, Part A	Title I, Part A	Title I, Part A
Transition Supports	Parent and Family Engagement	Equitable Services	Professional Development
Title I, Part C	Title I, Part C	Title I, Part C	Title I, Part C
Identification and Enrollment	Parent and Family Engagement	Equitable Services	Migrant Student Records Transfer
Title I, Part D	Title I, Part D	Title I, Part D	Title I, Part D
Transition Supports	Parent and Family Engagement	No Uploads	Student Achievement
Title II, Part A	Title II, Part A	Title II, Part A	Title II, Part A
Charter School Requirements	Program Activity and Implementation	Equitable Services	Evaluation
Title III, Part A	Title III, Part A	Title III, Part A	Title III, Part A
Identification and Enrollment	Parent and Family Engagement	Equitable Services	Professional Development
Title IV, Part A	Title IV, Part A	Title IV, Part A	Title IV, Part A
Stakeholder Consultation	Program Activity and Implementation	Equitable Services	Evaluation
Title V, Part B	Title V, Part B	Title V, Part B	Title V, Part B
Identification and Enrollment	Program Activity and Implementation	No Uploads	Evaluation
Title IX, Part A	Title IX, Part A	Title IX, Part A	Title IX, Part A
Identification and Enrollment	Professional Development	No Uploads	LEA McKinney-Vento Policy

Program Monitoring Tier 1

October Uploads	November Uploads	February Uploads	March Uploads
Title I, Part A	Title I, Part A	Title I, Part A	Title I, Part A
Transition Supports	Parent and Family Engagement	Equitable Services	Professional Development

October

- [Transition Supports](#)

November

- [Parent and Family Engagement](#)

February

- [Equitable Services](#)

March

- Professional Development

Professional Development

ESEA and Title I, Part A professional development

- Covers a wide range of stakeholders.
- Focuses on increasing knowledge and skills.
- Aligns with, and directly relates to, academic goals of the school or LEA.
- Revolves around improving student academic achievement.

March Uploads

Professional Development: Improve Instruction and Use of Data

- | | |
|--|---|
| <p>1. The LEA provides professional development and other activities for teachers, paraprofessionals, and other school personnel to improve instruction and use of data from academic assessments.</p> | <p>1. Provide professional development documentation for each sample school outlining professional development activities provided to improve instruction and the use of data. (examples: agendas with dated sign-in sheets, roles and signatures of attendees, presentation slides, training materials, handouts, emails with links to online training videos, handouts, website screenshots).</p> |
|--|---|

Tier 2 Supports

- Tier 1 review and follow-up
- Technical Assistant (TA) Tuesdays
 - Every other Tuesday from 1-3 p.m. Eastern Time

Reminder: The **March Uploads** are **due March 31, 2022**, to the monitoring ShareFile.

Monitoring Contacts

- **Assistant Vice-Chancellor Amanda Meeks**
Amanda.Meeks@fldoe.org
- **Monitoring Consultant Dr. Janet Capps**
Janet.Capps@fldoe.org

Program Office Contacts

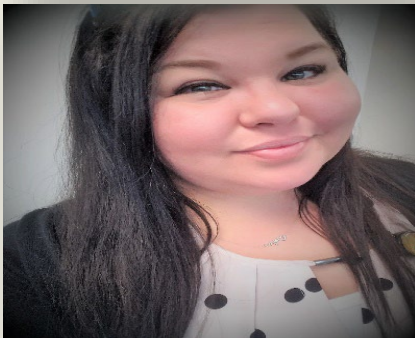


Shonda Goldsmith

Federal Program Assistant Director
Bureau of Federal Educational Programs

Shonda.Goldsmith@fldoe.org

(850) 245-0693



Samantha Mosley

Federal Program Assistant
Bureau of Federal Educational Programs

Samantha.Mosley@fldoe.org

(850) 245-0688

Program Office Contacts



Jacqueline Hill

Federal Program Specialist

Jacqueline.Hill@fldoe.org

(850) 245-0845



Matthew Wiley

Federal Program Specialist

Matthew.Wiley@fldoe.org

(850) 245-9732



Casey Graham

Federal Program Specialist

Casey.Graham@fldoe.org

(850) 245-0603

SOCIALIZE WITH US

